

**BELL HAMMER ACTUATOR - 10lb**

**DS-514A**

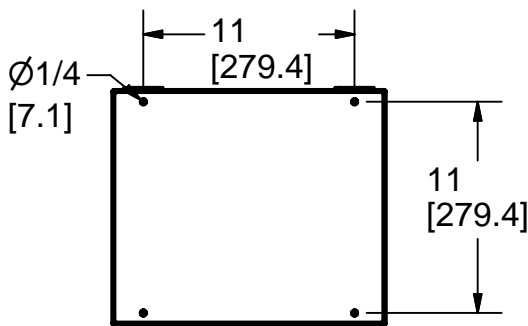
45 West Street, Medfield, MA 02052

p: 508.359.4396 f: 508.359.4482

[www.electrictime.com](http://www.electrictime.com)

DESCRIPTION

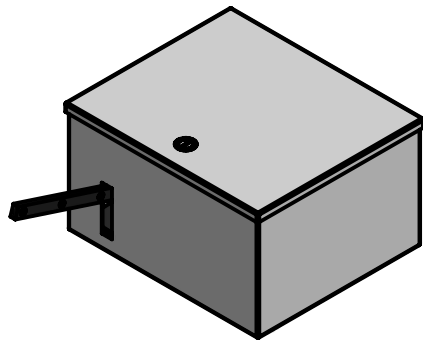
The bell hammer actuator is designed as a non intrusive means to automate an existing bell and hammer setup. At the top of the hour a cam drives the lever arm down causing the hammer or clapper to strike the bell. This setup maintains the original sound quality and preserves the original bell and hammer.



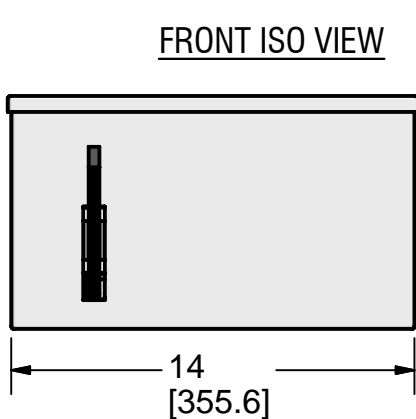
MOUNTING HOLES

SPECIFICATIONS

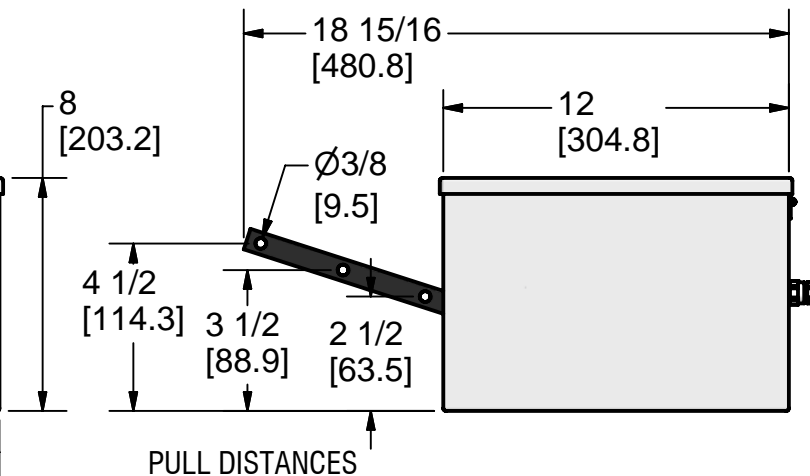
- Up to 10lb bell hammer or clapper (pulls down only)
- (1) strike per second maximum
- 4.5" [115] max pull distance
- Consult Electric Time Co. for mounting and connection details
- 115VAC 1A required. *Optional 220VAC* (motor operation)
- 24VAC hour strike signal required from Electric Time Co. 99B-MI clock controller
- Driven by an AC gear motor with electronic brake



FRONT ISO VIEW



FRONT VIEW



PULL DISTANCES

SIDE VIEW

Note: Specifications subject to change without notice

PART NUMBER: BELL-HMR-ACT-10